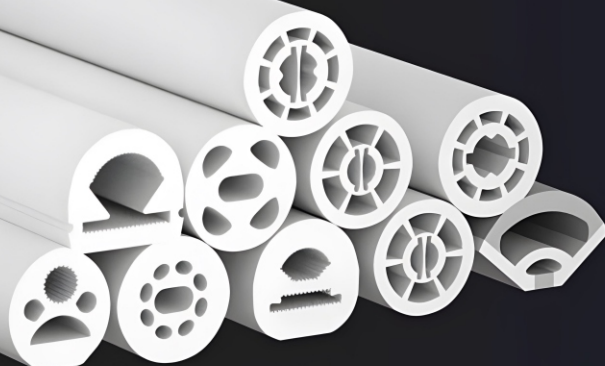


Circular Arc LED Neon Rope

LayviKay

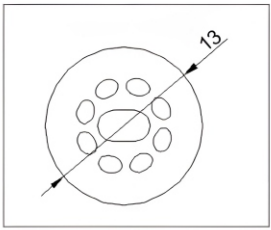
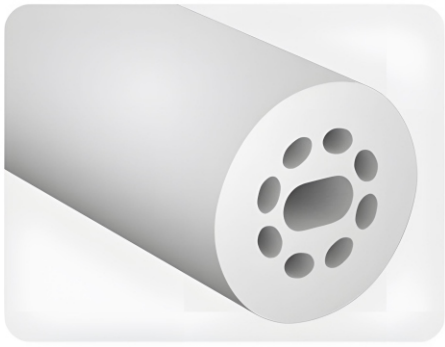
LED Neon Rope Lights Specification

Email: sales@layvikay.com



www.layvikay.com

ST-RD13T



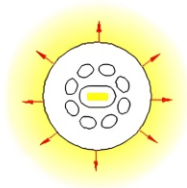
Section Dimensions: Dia. 13 mm
Illumination Direction: 360°
PCB Width: 5-6 mm



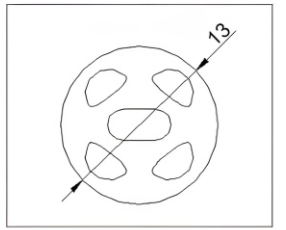
End Cup With Hole



End Cup



ST-RD13F



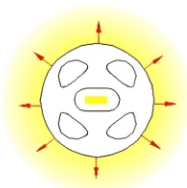
Section Dimensions: Dia. 13 mm
Illumination Direction: 360°
PCB Width: 5-6 mm



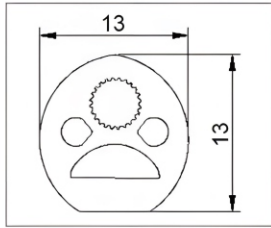
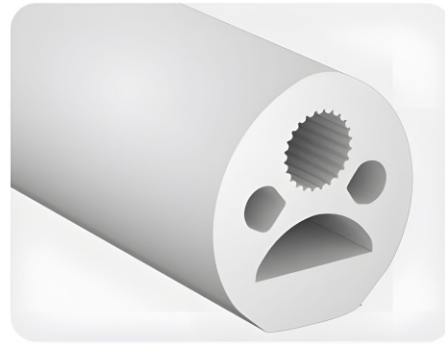
End Cup With Hole



End Cup



ST-RD13D



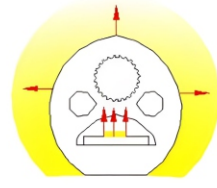
Section Dimensions: Dia. 13 mm
Illumination Direction: Type D
PCB Width: 5-6 mm



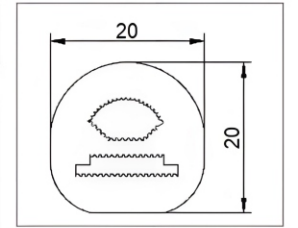
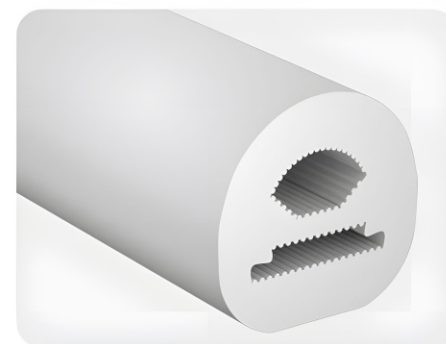
End Cup With Hole



End Cup



ST-RD20D



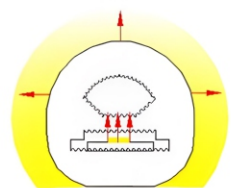
Section Dimensions: Dia. 20 mm
Illumination Direction: Type D
PCB Width: 10-12 mm



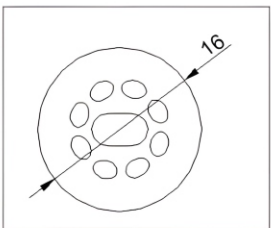
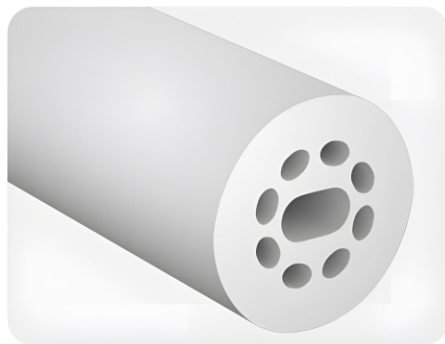
End Cup With Hole



End Cup



ST-RD16 (360°)



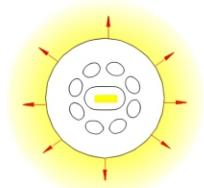
Section Dimensions: Dia. 16 mm
Illumination Direction: 360°
PCB Width: 5 mm



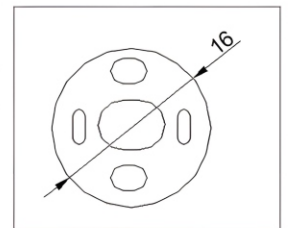
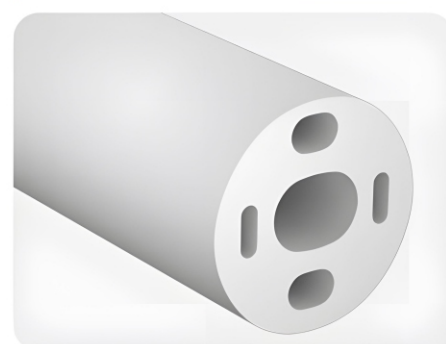
End Cup With Hole



End Cup



ST-RD16T (360°)



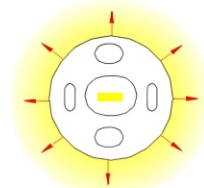
Section Dimensions: Dia. 16 mm
Illumination Direction: 360°
PCB Width: 5-6 mm



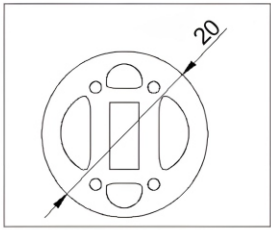
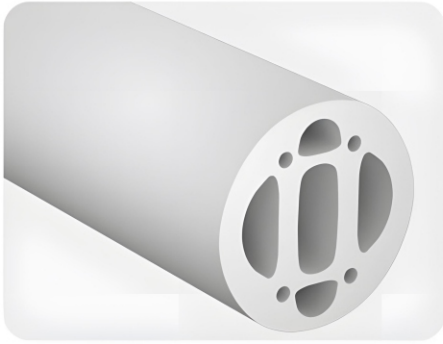
End Cup With Hole



End Cup



▶ **ST-RD20 (360°)**

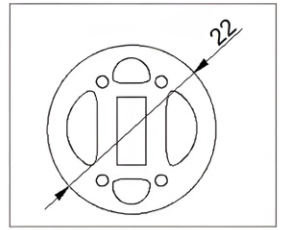
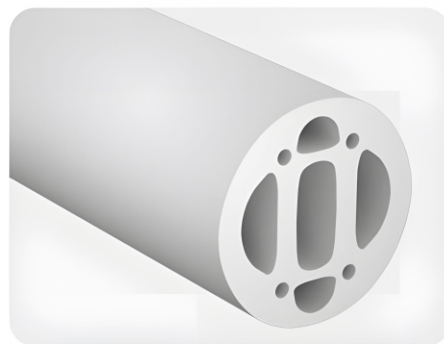


Section Dimensions: Dia. 20 mm

Illumination Direction: 360°

PCB Width: 6 mm

▶ **ST-RD22 (360°)**



Section Dimensions: Dia. 22 mm

Illumination Direction: 360°

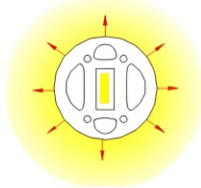
PCB Width: 6-8 mm



End Cup With Hole



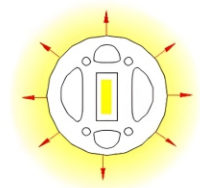
End Cup



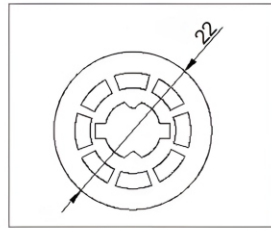
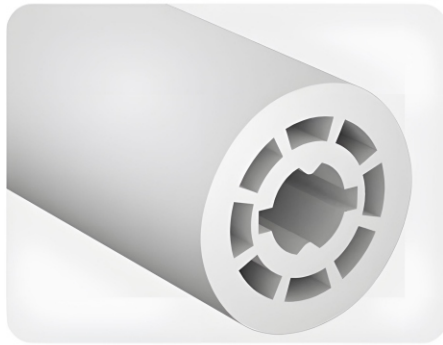
End Cup With Hole



End Cup



▶ **ST-RD22 (360°)**

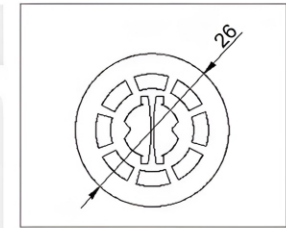
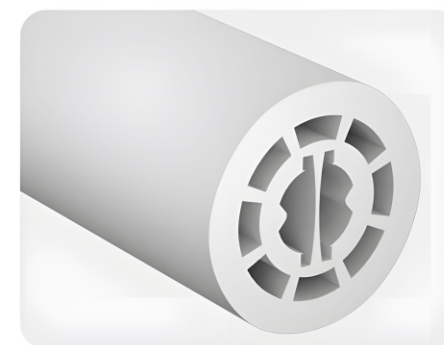


Section Dimensions: Dia. 22 mm

Illumination Direction: 360°

PCB Width: 8 mm

▶ **ST-RD26 (360°)**



Section Dimensions: Dia. 26 mm

Illumination Direction: 360°

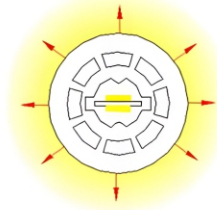
PCB Width: 8-10 mm



End Cup With Hole



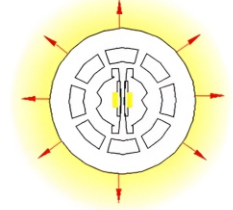
End Cup



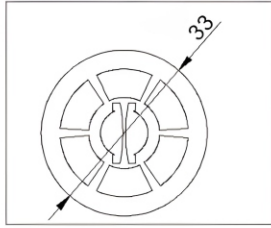
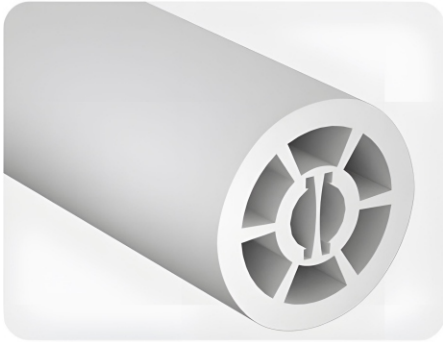
End Cup With Hole



End Cup



▶ **ST-RD33 (360°)**

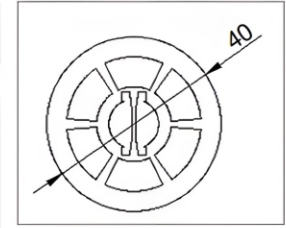
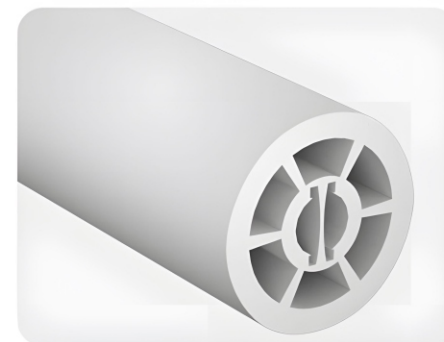


Section Dimensions: Dia. 33 mm

Illumination Direction: 360°

PCB Width: 8 mm

▶ **ST-RD40 (360°)**



Section Dimensions: 15 mm x 13 mm

Illumination Direction: 360°

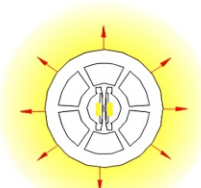
PCB Width: 8-10 mm



End Cup With Hole



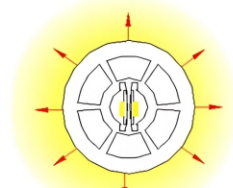
End Cup



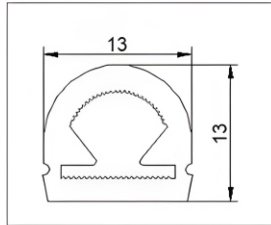
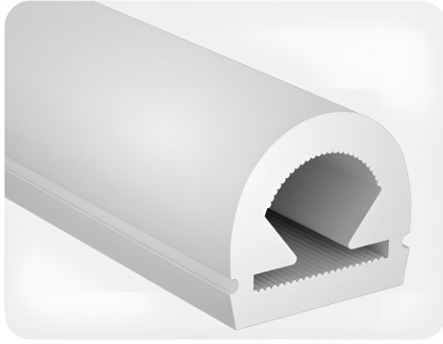
End Cup With Hole



End Cup



ST-RD1313 (D)



Section Dimensions: 13 mm x 13 mm

Illumination Direction: Type D

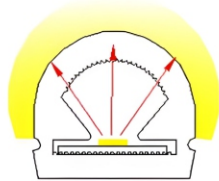
PCB Width: 8 mm



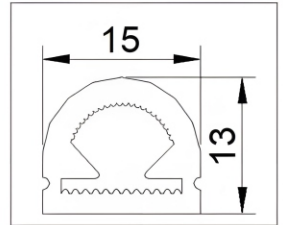
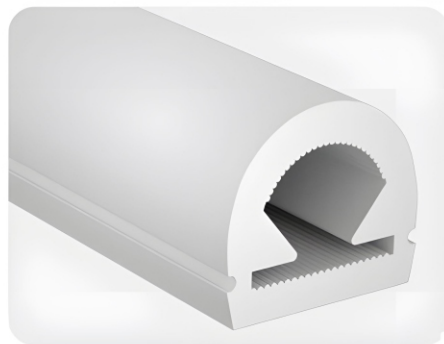
End Cup With Hole



End Cup



ST-RD1315 (D)



Section Dimensions: 15 mm x 13 mm

Illumination Direction: Type D

PCB Width: 8 -10 mm



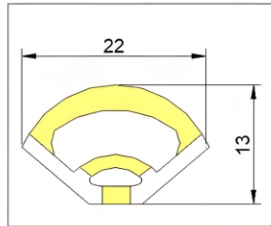
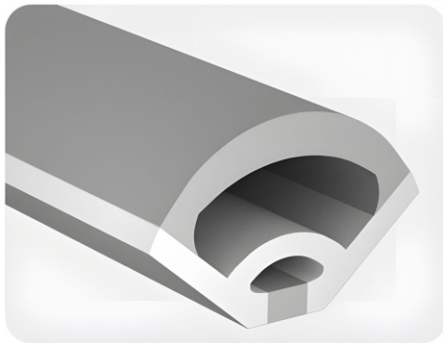
End Cup With Hole



End Cup



ST-RV22 (90°)



Section Dimensions: 22 mm x 13 mm

Glow Angle: 90°

PCB Width: 5 mm

